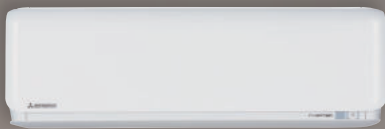


Residential Air Conditioners *SR*series

CHALIAN CORPORATION
Tel: 01.259042 - 70.900575



High Performance Air Conditioning



SINGLE-SPLIT WALL MOUNTED TYPE

SRK-ZSP-W



SRK25ZSP-S/W, SRK35ZSP-S/W



Wireless
remote control



SRC25ZSP-S/W, SRC35ZSP-S/W

Power Consumption Chart

SRK25 (9000 BTU) **Low: 1.2A** – High: 4A

SRK35 (12000 BTU) **Low: 1.5A** – High: 5.5A

KEY FEATURES

- The compact design of the ZSP series makes it perfect for small spaces such as spare bedrooms and home offices.
- Energy class improvement. All class A⁺⁺.
- Low Global Warming Potential (GWP) and High energy efficiency by new refrigerant R32.
- The compact and lightweight design of outdoor unit offers great installation flexibility.
- Self-cleaning operation helps keep the room air clean.

SPECIFICATIONS

				9000 BTU	12000 BTU
				SRK25ZSP-W	SRK35ZSP-W
				SRC25ZSP-W	SRC35ZSP-W
Indoor unit					
Outdoor unit					
Power source				1 Phase, 220 - 240V, 50Hz	
Nominal cooling capacity (Min~Max)		kW		2.5(0.9~3.1)	3.2(0.9~3.7)
Nominal heating capacity (Min~Max)		kW		2.8(1.0~4.1)	3.6(1.0~4.6)
Power consumption		Cooling/Heating		0.710 / 0.690	0.910 / 0.930
EER/COP		Cooling/Heating		3.52/4.05	3.52 / 3.87
Max. running current				A	9
Sound power level	Indoor	Cooling/Heating		57 / 57	58 / 58
	Outdoor	Cooling/Heating		57 / 56	59 / 60
Sound pressure level	Indoor	Cooling (Hi/Me/Lo)		45 / 34 / 23	45 / 36 / 23
		Heating (Hi/Me/Lo)		43 / 34 / 26	44 / 36 / 28
	Outdoor	Cooling/Heating		47 / 45	48 / 48
Air flow	Indoor	Cooling (Hi/Me/Lo)		10.0 / 7.3 / 4.2	9.5 / 6.8 / 4.2
		Heating (Hi/Me/Lo)		9.5 / 7.3 / 5.2	9.6 / 7.4 / 5.5
	Outdoor	Cooling/Heating		23.7 / 19.7	22.8 / 22.0
Exterior dimensions	Indoor	HeightxWidthxDensity		267 x 783 x 210	
	Outdoor			540 x 645(+57) x 275	
Net weight	Indoor / Outdoor			7.0 / 26.5	7.0 / 28.5
Refrigerant	Type/GWP		R32 / 675		
	Charge		kg/TCO ₂ Eq	0.550 / 0.371	0.68 / 0.459
Refrigerant piping size	Liquid/Gas		ø mm		6.35(1/4") / 9.52(3/8")
Refrigerant line (one way) length [chargeless length]			m	Max. 15 [10]	Max. 15 [Not required]
Vertical height differences	Outdoor is higher/lower		m	Max. 10 / Max. 10	
Outdoor operating temperature range	Cooling		°CDB		
	Heating		-15~46		
Clean filter			-15~24		

* The data are measured under the following conditions(ISO-T1, H1). Cooling: Indoor temp. of 27°CDB, 19°CWB, and outdoor temp. of 35°CDB. Heating: Indoor temp. of 20°CDB, and outdoor temp. of 7°CDB, 6°CWB.

* Sound level indicates the value in an anechoic chamber. During operation these values are somewhat higher due to ambient conditions.

* 'tonne(s) of CO₂ equivalent' means a quantity of greenhouse gases- expressed as the product of the weight of the greenhouse gases in metric tonnes and of their global warming potential.



SINGLE-SPLIT WALL MOUNTED TYPE

SRK-ZS-WF

New!



SRK25ZS-WF, SRK35ZS-WF, SRK50ZS-WF
Pure White(-WF)



Power Consumption Chart

SRK25 (9000 BTU) **Low: 1.2A** – High: 4A

SRK35 (12000 BTU) **Low: 1.5A** – High: 5.5A

SRK50 (18000 BTU) **Low: 3A** – High: 8A

SRK71 (24000 BTU) **Low: 4A** – High: 11A



SRC25ZS-W2, SRC35ZS-W2



SRC50ZS-WF

KEY FEATURES

- Elegant, timeless design, best suited for small to medium sized living spaces.
- Users can choose a colour they like from three different choices.
- Low Global Warming Potential (GWP) and High energy efficiency by new refrigerant R32.
- Quiet Air Flow & Long Reach is achieved by jet technology.
- Colour variation available. Users can choose from three different choices.
- Wireless interface control included.



Wireless remote control

SPECIFICATIONS

				9000 BTU	12000 BTU	18000 BTU
				SRK25ZS-WF	SRK35ZS-WF	SRK50ZS-WF
				SRC25ZS-W2	SRC35ZS-W2	SRC50ZS-W
Power source				1 Phase, 220 - 240V, 50Hz		
Nominal cooling capacity (Min~Max)		kW		2.5(0.9~3.1)	3.5(0.9~4.0)	5.0(1.3~5.5)
Nominal heating capacity (Min~Max)		kW		3.2(0.9~4.5)	4.0(0.9~5.0)	5.8(1.3~6.6)
Power consumption		Cooling/Heating	kW	0.62 / 0.74	0.89 / 0.94	1.35 / 1.56
EER/COP		Cooling/Heating		4.03 / 4.32	3.93 / 4.26	3.70 / 3.72
Max. running current			A	9	9	14.5
Sound power level	Indoor	Cooling/Heating	dB(A)	50 / 53	54 / 56	59 / 60
	Outdoor	Cooling/Heating		56 / 58	61 / 61	61 / 63
Sound pressure level	Indoor	Cooling (Hi/Me/Lo/Ulo)		36 / 28 / 23 / 19	40 / 30 / 26 / 19	46 / 36 / 29 / 22
		Heating (Hi/Me/Lo/Ulo)		39 / 30 / 24 / 19	41 / 36 / 25 / 19	46 / 37 / 31 / 24
	Outdoor	Cooling/Heating		46 / 46	50 / 48	51 / 52
Air flow	Indoor	Cooling (Hi/Me/Lo/Ulo)	9.9 / 8.0 / 5.9 / 5.0	11.3 / 8.7 / 7.0 / 5.0	12.1 / 9.9 / 7.4 / 5.9	
		Heating (Hi/Me/Lo/Ulo)	11.3 / 8.7 / 6.7 / 5.9	12.3 / 11.0 / 7.0 / 5.6	13.9 / 11.2 / 9.1 / 7.4	
	Outdoor	Cooling/Heating	27.4 / 23.6	31.5 / 27.8	32.8 / 32.8	
Exterior dimensions	Indoor	HeightxWidthxDepth	mm	290 x 870 x 230		
	Outdoor			540 x 780(+62) x 290		595 x 780(+62) x 290
Net weight		Indoor / Outdoor	kg	9.5 / 31.0	9.5 / 34.5	10.0 / 36.0
Refrigerant		Type/GWP		R32 / 675		
		Charge	kg/TCO ₂ Eq	0.62 / 0.419	0.78 / 0.527	1.05 / 0.709
Refrigerant piping size		Liquid/Gas	ø mm	6.35(1/4") / 9.52(3/8")		
Refrigerant line (one way) length [chargeless length]			m	Max. 20 [15]		
Vertical height differences		Outdoor is higher/lower	m	Max. 10 / Max. 10		
Outdoor operating temperature range	Cooling	°CDB		-15~46		
	Heating			-15~24		
Clean filter				Allergen Clear Filter x 1, Photocatalytic Washable Deodorising Filter x 1		

* The data are measured under the following conditions(ISO-T1, H1). Cooling: Indoor temp. of 27°CDB, 19°CWB, and outdoor temp. of 35°CDB. Heating: Indoor temp. of 20°CDB, and outdoor temp. of 7°CDB, 6°CWB.

* Sound level indicates the value in an anechoic chamber. During operation these values are somewhat higher due to ambient conditions.

* 'tonne(s) of CO₂ equivalent' means a quantity of greenhouse gases- expressed as the product of the weight of the greenhouse gases in metric tonnes and of their global warming potential.

SINGLE-SPLIT WALL MOUNTED TYPE

SRK-ZR-W



SRK71ZR-W (R32), SRK100ZR-S (R410)



Power Consumption Chart

SRK71 (24000 BTU) **Low: 4A** – High: 11A

SRC71ZR-W (R32) , FDC100VNP-S (R410)

KEY FEATURES

- ZR series is the ideal solution for heating and cooling larger spaces in your home.
- Compact and light weighted . The 10.0kW outdoor unit is now 57kg and is 20% lighter than the previous model.
- Low Global Warming Potential (GWP) and High energy efficiency by new refrigerant R32.
- Quiet Air Flow & Long Reach is achieved by jet technology.
- Allergen clear operation cleans air, using a control scheme owned only by Mitsubishi Heavy Industries Thermal Systems.
- Wireless interface control (optional) .

SPECIFICATIONS

				24000 BTU	34000 BTU
Indoor unit				SRK71ZR-W	SRK100ZR-W
Outdoor unit				SRC71ZR-W	FDC100VNP-W
Power source				1 Phase, 220 - 240V, 50Hz	
Nominal cooling capacity (Min~Max)		kW		7.1 (2.3~7.8)	9.6 (2.1~9.6)
Nominal heating capacity (Min~Max)		kW		8.0 (2.0~10.8)	10.0 (1.7~10.4)
Power consumption		Cooling/Heating kW		1.93 / 1.95	3.10 / 2.80
EER/COP		Cooling/Heating		3.68 / 4.10	3.10 / 3.57
Max. running current		A		17	19
Sound power level	Indoor	Cooling/Heating		57 / 60	63 / 63
	Outdoor	Cooling/Heating		63 / 63	68 / 67
Sound pressure level	Indoor	Cooling (Hi/Me/Lo/Ulo)		44 / 41 / 37 / 25	48 / 45 / 40 / 27
	Outdoor	Cooling/Heating		46 / 39 / 35 / 28	48 / 43 / 38 / 30
Air flow	Indoor	Cooling (Hi/Me/Lo/Ulo)		20.5 / 18.6 / 16.2 / 10.4	24.5 / 21.3 / 17.6 / 10.4
	Outdoor	Cooling/Heating		25.0 / 19.8 / 17.3 / 13.3	27.5 / 23.2 / 19.1 / 13.6
Exterior dimensions	Indoor	HeightxWidthxDepth		339 x 1197 x 262	
	Outdoor	HeightxWidthxDepth		750 x 880(+88) x 340	
Net weight		Indoor / Outdoor		15.5 / 56.0	16.5 / 57.0
Refrigerant		Type/GWP		R32 / 675	R410A
Refrigerant piping size		Liquid/Gas		1.5 / 1.013	1.6 / 1.080
Refrigerant line (one way) length [chargeless length]		Charge		1.5 / 1.013	1.7 / 1.148
Vertical height differences		Outdoor is higher/lower		6.35(1/4") / 15.88(5/8")	
Outdoor operating temperature range		Cooling		Max.30 [15]	
		Heating		Max.20 / Max.20	
				-15~46	
				-15~24	
Clean filter				Allergen Clear Filter x 1, Photocatalytic Washable Deodorising Filter x 1	

• The data are measured under the following conditions(ISO-T1, H1). Cooling: Indoor temp. of 27°CDB, 19°CWB, and outdoor temp. of 35°CDB. Heating: Indoor temp. of 20°CDB, and outdoor temp. of 7°CDB, 6°CWB.
 • Sound level indicates the value in an anechoic chamber. During operation these values are somewhat higher due to ambient conditions.
 • 'tonne(s) of CO₂ equivalent' means a quantity of greenhouse gases- expressed as the product of the weight of the greenhouse gases in metric tonnes and of their global warming potential.

SINGLE-SPLIT FLOOR STANDING TYPE

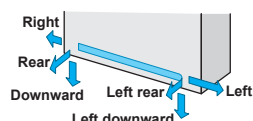
SRF-ZS/ZSX

Auto air outlet selection

In case both lower and upper air outlets can be selected.

Installation workability

Piping and drain hose connection can be selected out of 6-directions.



SRF25ZJX-S, SRF35ZJX-S, SRF50ZSX-W

Wireless remote control



SRC25ZJX-S, SRC35ZJX-S



SRC50ZSX-W



KEY FEATURES

- The elegant semi flat front panel in stylish white, fit various kinds of rooms and create relaxing atmosphere.
- Choice from wall hanging, floor standing or behind gallery installation is available.
- Low Global Warming Potential (GWP) and High energy efficiency by new refrigerant R32.
- Quiet Operation. The level of 25ZS-W in the cooling Ulo mode is only 25dB(A).
- The "flap control system" allows users to change flap angles and positions according to their preference. Flaps can be set at different angles.
- Allergen clear filter is equipped as a default.

SPECIFICATIONS

			9000 BTU	12000 BTU	18000 BTU	
Indoor unit			SRF25ZJX-S	SRF35ZJX-S	SRF50ZSX-W	
Outdoor unit			SRC25ZJX-S	SRC35ZJX-S	SRC50ZSX-W2	
Power source			1 Phase, 220 - 240V, 50Hz			
Nominal cooling capacity (Min~Max)		kW	2.5 (0.9~3.1)	3.5 (0.9~4.1)	5.0 (1.1~5.6)	
Nominal heating capacity (Min~Max)		kW	2.9 (0.8~3.7)	4.5 (0.8~5.2)	6.0 (0.8~7.4)	
Power consumption		kW	Cooling/Heating 0.59 / 0.66	0.82 / 1.12	1.32 / 1.58	
EER/COP			Cooling/Heating 4.24 / 4.39	4.27 / 4.02	3.79 / 3.80	
Max. running current		A	9	9	9	
Sound power level	Indoor	Cooling/Heating	50 / 51	51 / 52	58 / 58	
	Outdoor	Cooling/Heating	59 / 60	63 / 64	63 / 62	
Sound pressure level	Indoor	Cooling (Hi/Me/Lo/Ulo)	38 / 32 / 29 / 25	40 / 35 / 33 / 29	46 / 38 / 33 / 28	
		Heating (Hi/Me/Lo/Ulo)	39 / 35 / 33 / 29	41 / 36 / 35 / 33	46 / 41 / 38 / 32	
	Outdoor	Cooling/Heating	45 / 47	50 / 51	51 / 51	
Air flow	Indoor	Cooling (Hi/Me/Lo/Ulo)	9.0 / 7.6 / 6.7 / 5.8	9.2 / 7.8 / 7.3 / 6.4	11.5 / 9.6 / 7.4 / 6.6	
		Heating (Hi/Me/Lo/Ulo)	10.5 / 8.2 / 7.7 / 6.6	10.7 / 8.3 / 8.1 / 7.4	12.0 / 10.0 / 9.4 / 7.6	
	Outdoor	Cooling/Heating	27.4 / 27.4	31.5 / 31.5	39.0 / 33.0	
Exterior dimensions	Indoor	HeightxWidthxDepth	600 x 860 x 238			
	Outdoor		540 x 780(+62) x 290		640 x 800(+71) x 290	
Net weight		Indoor / Outdoor	kg	18.0 / 31.0	19.0 / 34.5	19.0 / 45.0
Refrigerant		Type/GWP		R410	R410	R32
		Charge	kg/TCO ₂ Eq	0.62/0.419	0.78/0.527	1.30 / 0.878
Refrigerant piping size		Liquid/Gas	ø mm	6.35(1/4") / 9.52(3/8")		6.35(1/4") / 12.7(1/2")
Refrigerant line (one way) length[chargeless length]			m	Max. 20 [10]	Max. 20 [15]	Max. 30 [15]
Vertical height differences		Outdoor is higher/lower	m	Max. 10 / Max. 10		Max. 20 / Max. 20
Outdoor operating temperature range		Cooling	°CDB	-15~24		-15~46
		Heating				-20~24
Clean filter				Allergen Clear Filter x 1 Photocatalytic Washable Deodorising Filter x 1		

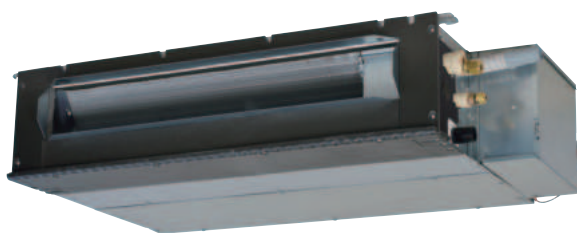
* The data are measured under the following conditions(ISO-T1, H1). Cooling: Indoor temp. of 27°CDB, 19°CWB, and outdoor temp. of 35°CDB. Heating: Indoor temp. of 20°CDB, and outdoor temp. of 7°CDB, 6°CWB.

* Sound level indicates the value in an anechoic chamber. During operation these values are somewhat higher due to ambient conditions.

* 'tonne(s) of CO₂ equivalent' means a quantity of greenhouse gases- expressed as the product of the weight of the greenhouse gases in metric tonnes and of their global warming potential.

SINGLE-SPLIT CEILING CONCEALED TYPE

SRR-ZS

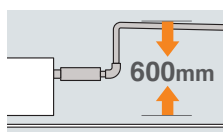


SRR35ZS-W

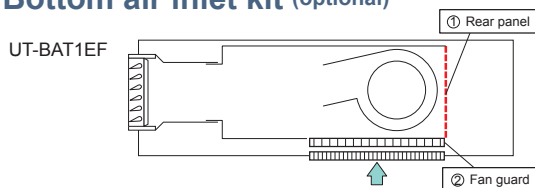


Enhanced Installation Workability

600mm Drain Pump is mounted in all models. The indoor unit is completely hidden in the ceiling, so this is suitable for spaces with classy interior decoration.



Bottom air inlet kit (optional)



Wireless remote control



SRC35ZS-W2

KEY FEATURES

- The SRR series' indoor unit is concealed under the ceiling and is perfect a for a living room or bedroom area.
- Thin design, the height of SRR models is only 200mm.
- Low Global Warming Potential (GWP) and High energy efficiency by new refrigerant R32.
- Quiet Operation
- Low Static Pressure Level (35Pa)

SPECIFICATIONS

12000 BTU

Indoor unit				SRR35ZS-W
Outdoor unit				SRC35ZS-W2
Power source				1 Phase, 220 - 240V, 50Hz
Nominal cooling capacity (Min~Max)		kW		3.5 (0.9 ~ 4.1)
Nominal heating capacity (Min~Max)		kW		4.2 (1.0 ~ 5.2)
Power consumption	Cooling/Heating	kW		0.93 / 1.01
	Cooling/Heating			3.76 / 4.16
EER/COP				
Max. running current		A		9
Sound power level	Indoor	Cooling/Heating	dB(A)	57 / 60
	Outdoor	Cooling/Heating		62 / 62
Sound pressure level	Indoor	Cooling (Hi/Me/Lo/Ulo)		38 / 34 / 31 / 25
	Outdoor	Heating (Hi/Me/Lo/Ulo)		42 / 38 / 35 / 29
Air flow	Indoor	Cooling/Heating		50 / 50
		Cooling (Hi/Me/Lo/Ulo)		10.0 / 8.5 / 7.0 / 5.0
	Outdoor	Heating (Hi/Me/Lo/Ulo)		10.5 / 9.5 / 8.5 / 6.5
		Cooling/Heating		31.5 / 27.8
Available external static pressure		Pa	35(Initial static pressure with air filter : 5Pa)	
Exterior dimensions	Indoor	HeightxWidthxDepth	mm	200 x 750 x 500
	Outdoor			540 x 780(+62) x 290
Net weight		Indoor / Outdoor	kg	20.5 / 34.5
Refrigerant		Type/GWP	R32 / 675	
		Charge	kg/CO ₂ Eq	0.78 / 0.527
Refrigerant piping size		Liquid/Gas	ø mm	6.35(1/4") / 9.52(3/8")
Refrigerant line (one way) length[chargeless length]		Max. 20 [15]		
Vertical height differences		Outdoor is higher/lower	m	
Outdoor operating temperature range		Cooling	-15~46	
		Heating	-15~24	
Bottom air inlet kit (option)		UT-BAT1EF		

* The data are measured under the following conditions(ISO-T1, H1). Cooling: Indoor temp. of 27°CDB, 19°CWB, and outdoor temp. of 35°CDB. Heating: Indoor temp. of 20°CDB, and outdoor temp. of 7°CDB, 6°CWB.

* Sound level indicates the value in an anechoic chamber. During operation these values are somewhat higher due to ambient conditions.

* 'tonne(s) of CO₂ equivalent' means a quantity of greenhouse gases- expressed as the product of the weight of the greenhouse gases in metric tonnes and of their global warming potential.